

HUB BULLETIN



JANURARY — MARCH 2026 ISSUE no. 76

General Managers Report

Welcome to Issue 76 of the Hub Bulletin! We've hit the ground running in 2026, and it's hard to believe the first quarter of the year has already come and gone.

It has been a productive start to the year with a continued focus on professional development, digital literacy, and staying informed in the continually shifting NDIS landscape. Here is a quick look at the activities that shaped our first quarter:

Fri 23rd Jan — NDIS Fast Facts (online)

Fri 20th Feb — 30 Mob Online Check-in

Fri 27th Feb — NDIS Fast Facts (online)

Thurs 19th Mar — Understanding Digital Accessibility (webinar)

Fri 27th Mar — NDIS Fast Facts (online)

A big thank you to everyone for your participation and for helping us maintain a high standard of support as we move into the second quarter!

FUN FACTS AND JOKES:

Australia is wider than the moon! The moon is 3400 km in diameter, while Australia's diameter from east to west is almost 4000 km.



I'm such a good navigator, a self-driving car once asked me for directions.

COL'S HUB ALBUM IS FINISHED!



RONNIE MAC AT THE CINEMAS



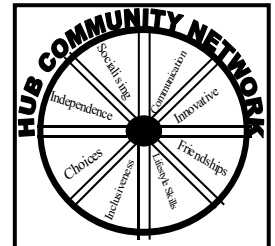
Website: www.hubdisabilitysupport.org.au

Phone: (07) 4168 3255

Email: hub@burnett.net.au



@hubdisabilitysupport



EXERCISE PHYSIO BREAKUP LUNCH



A&M Exercise Physiology hosted an end-of-year breakup lunch in the Memorial Park, Kingaroy. A few Hub staff members and participants attended the event — to close out a year's worth of hard work in the gym!

RECENT ACTIVITIES

(Top left, centre) Sam hard at work in the gym! Making great progress.
(Top right) Bogan enjoying the biggest dog bone he's ever seen!



(Bottom left) Uncle Shane's colourful beard on crazy hair day?!
(Bottom right) Trista cooking up a storm in the Hub office...

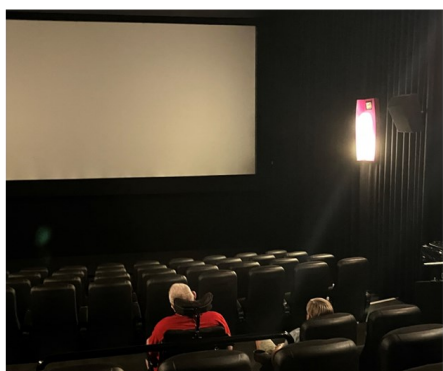


Heavy rainfall and flooding was experienced across the Burnett earlier this year, around the 8th of March. South Burnett Regional Council were relieved to report on Tuesday, 10 March that the flash flooding threat had reduced in the South Burnett region. The council reported significant damage to the road network. Bridges did not re-open until inspections were made by certified bridge inspectors. The council reported the Burnett Highway was reopened quickly, although at the time access to Murgon was still restricted as the Bunya Highway remained closed at Krebs Bridge and Angels Bridge.*

RECENT ACTIVITIES



CALOM'S MOOLOOLABA GETAWAY



Calom enjoyed his annual 3 day getaway to Mooloolaba recently! Some of the things he got up to include; Dinner at the Surf Club, walks along the esplanade, a visit to the cinemas and photos at the Ginger factory.

NDIA Quarterly Report Overview

This report provides an overview of the performance and operations of the National Disability Insurance Agency (NDIA) for the **second quarter (Q2)** of 2025-26. It highlights progress, trends, and areas of focus in the continued delivery of the National Disability Insurance Scheme (NDIS).

- **The National Disability Insurance Scheme (NDIS) supports: 761,442 participants**, up from approximately 751,000 in the previous quarter.
- **Graeme Head** was appointed by the **NDIA Board** as the new **Chief Executive Officer** for a 3 year term starting in November 2025.
- The **NDIS planning process** will change to become fairer, more consistent and easier for participants. This new way of planning reflects feedback from thousands of people with disability, their families and carers, and providers, through the Independent Review of the NDIS.

Need to talk with someone?

Lifeline: 131 114
Beyond Blue: 1300 224 636
Griefline: 1300 845 745

Hub would like pay respects to first nations people past, present and future on this land we live and share as one.

Stay in touch!

If you'd like to share something in the next Hub Bulletin — a story, photo, or event, please get in touch with us! hub@burnett.net.au

Website: www.hubdisabilitysupport.org.au Phone: (07) 4168 3255 Email: hub@burnett.net.au

HUB Community Network has been providing assistance to people throughout the South Burnett since 1996.